

1" = 30'

10-19-18

VN1

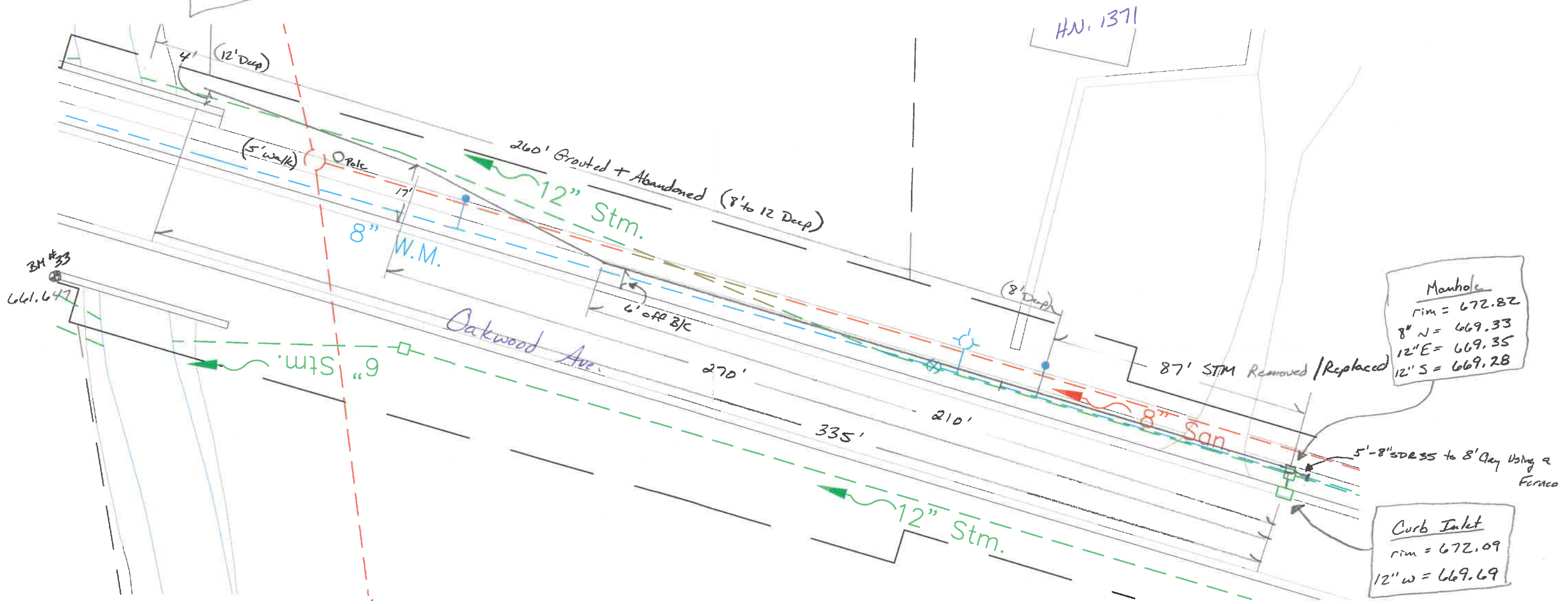
Todd Kruse

Inspected By: A. Deblin

1371 OAKWOOD AVENUE

335' - 12" N12 ADS Pipe
(42" Deep F/L +/-)
Grade Set @ 1.6% for South half

12" Outlet F/L = 658.65



Manhole
 rim = 672.82
 8" N = 669.33
 12" E = 669.35
 12" S = 669.28

Curb Inlet
 rim = 672.09
 12" w = 669.69

5'-8" SDSS to 8" Day using a Formco

87' STM Removed / Replaced

HN. 1371

Oakwood Ave.

BM #33

661.647

12" Outlet F/L = 658.65

260' Grouted + Abandoned (8' to 12' Deep)
12" Stm.

(5' walk)

8" W.M.

6' off B/C

270'

335'

210'

87' STM Removed / Replaced

8" San

12" Stm.

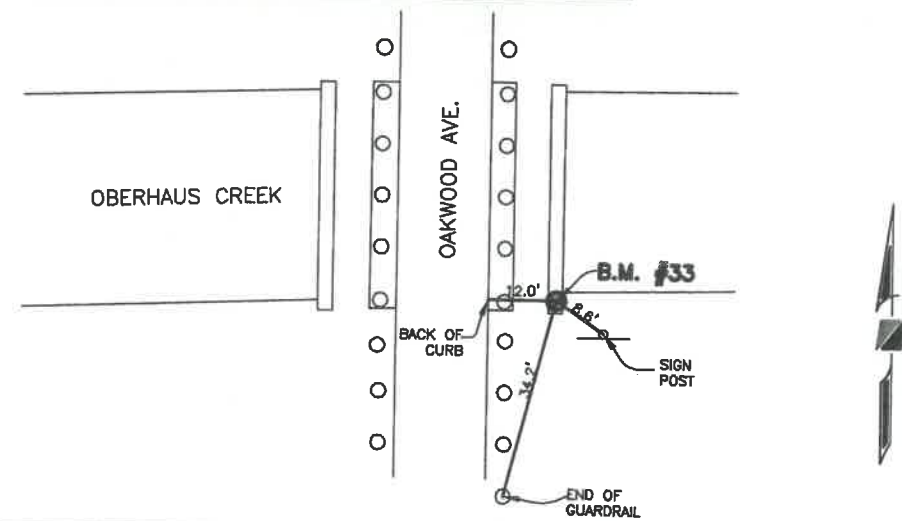
6" Stm.

4' (12' Deep)

8' Deep

5'-8" SDSS to 8" Day using a Formco

CITY OF NAPOLEON BENCHMARK #33



Point Number: 33

Point Type: CONCRETE MONUMENT W/DISC

Point Description: OAKWOOD AVENUE BRIDGE
AT OBERHAUS CREEK IN THE SOUTHEAST HEADWALL

Northing: 635342.932

Easting: 1523123.714

Elevation: 661.647

Survey Units: U.S. SURVEY FEET

Survey Method: REAL-TIME KINEMATIC

Vertical Datum: NGVD 29

Horizontal Datum: STATE PLANE, NAD83

Coordinate System: 3401-OHIO NORTH

Notes:
VERTICAL CONTROL WAS BASED OFF
NGS DATA SHEET (PID# MD0139)
NAPOLEON ELEV.= 678.51'(NGVD 29)
ALSO BEING BM #46. CONVENTIONAL
LEVELS WERE RAN TO ALL BM POINTS.

PREPARED BY:
R.D.Zande & Associates
 6665 Airport Highway Suite 210
 Toledo, Ohio 43616
 Phone (419) 867-8888
 Fax (419) 867-8884